

Hearts and Minds

Newsletter for Encounter Lutheran College

Masterplan Milestones

KELVIN GRIVELL | PRINCIPAL

As we gain momentum in a new term, our Stage 11 & 12 building projects also continue at a pleasing rate of progress. The conclusion of our new Early Learning Centre and our Middle School Learning Centre in early 2024 will be quite a milestone. It will bring to fruition our current masterplan and invite our Board to re-engage in discussions about what might be part of Encounter's future. The Board have already commenced this conversation and will continue to consider opportunities in the months ahead.

For those of you who have been at Encounter for the past decade, you would know Stage 11 & 12 are just two of many buildings that have helped Encounter evolve from a primary school to an established and thriving Early Learning -Year 12 campus. Since 2012 Encounter has invested \$25m in capital works for the benefit of our College community.

Looking to next year, our purpose-built Early Learning Centre will double our current capacity, catering for 55 three and four year olds as they prepare for their longer term education at Encounter. With its own bespoke nature playground, along with modern and secure facilities, we look forward to opening this centre around Easter next year.

Our new Middle School Learning Centre will be ready to launch in January, eagerly awaiting our current Year 6 students, along with all those learners in Years 7-9. From 2024 onwards, this space will also serve as a transition space from Junior to Middle School, meaning our current Year 5 students will be enjoying this space in less than twelve months.



What's On!

TERM 3 | WEEK 2

Monday 31 July

- Extra-Curricular Photo Day

Tuesday 1 August

- Year 10 Immunisations (Men. B) Dose 2
- Open Boys Knockout Soccer

Wednesday 2 August

- Subject Selection & Careers Expo 5.30pm-8.00pm

Thursday 3 August

- Year 6 Exhibition Parent Info Session, 3.30pm-4.30pm

Friday 4 August

- Year 9/10 5x5 Basketball
- SATAC Year 12 Information Session

TERM 3 | WEEK 3

Wednesday 9 August

- National Tree Planting Day

Thursday 10 August

- Dance Excursion
- Wakakiri
- KidzBiz Growth & Development Family Session

Friday 11 August

- House Meeting

More at: www.encounter.sa.edu.au/calendar

CONTINUED ➔



thrive



connect



belong

FROM THE PRINCIPAL

CONTINUED ➡

Within this Centre there will be a dedicated hospitality space, science laboratory, visual arts studio and a digital technologies classroom. The design of the entire Centre will mean teachers and students will have the flexibility to learn in discreet spaces, or flow from one area to another. Given this entire Centre is taking shape in Block 69, the ability for learning to readily extend outdoors is also an exciting prospect. Furthermore, once there is more infrastructure in this area, we hope to make this Centre an invitational, community space, where many people can access and benefit from this innovative learning hub.

In addition to this exciting news, two demountable buildings will be constructed at Encounter in the coming months. A double classroom will be positioned between the covered courts and the current Dance shed, with Out of Schools Hours Care provider, YMCA, finally having a dedicated home to base themselves.

A triple demountable learning space will find its home parallel to the current Middle & Senior School Music space. It will be retro-fitted to accommodate Year 7-12 Dance and Drama and will form another 'bookend' to the newly completed Year 7-8 classes. This will allow us to add extra lawn to the surrounding area, providing an extended and relatively sheltered area for Middle School students to relax in during play times.

Although ongoing change has become an inevitable norm at Encounter, it is important to stop, give thanks and remember the journey as we reach new milestones along the path. I am grateful to have watched Encounter grow from a unique vantage point and I'm sure you share my excitement as we prepare for further exciting changes between now and early 2024.

Kelvin

STAGE 11 UPDATE: Middle Years Centre on the Block



STAGE 12 UPDATE: New Early Learning Centre



DEVOTION

The Point

SAM DUNBAR | MIDDLE & SENIOR SCHOOL TEACHER

One of the blessings of being a Teacher is the chance to spend a couple of weeks with my family between school terms. School holidays are a wonderful opportunity to spend quality time with my young kids and I'm able to be more available and present with them during this time. The holiday break we have just had however did not go as I planned or expected. It was nothing tragic or unfair, just a little unlucky. We were all unwell. Clearly, this happens to everyone from time to time but it meant that we spent much of the two weeks at home. We watched more TV than we would have liked. We did all the puzzles and read all the picture books we could. It was lovely family time for which I am grateful, but I couldn't help but be a little frustrated. I wanted to be out camping, playing at playgrounds, riding bikes, playing golf and seeing friends. My mindset was very much that we were 'stuck' at home. It can be hard to feel like we are making the most of our time when we aren't spending that time the way we hoped.

One of the things that my faith in Jesus gives me is purpose. His posture of love and kindness towards me means that I have purpose in seemingly small and insignificant moments, along with bigger and more significant ones.

Romans Chapter 8 talks about the difference between life with the Holy Spirit and life without. Here the Apostle Paul explains that God is always at work, in and through all things, even things that would seemingly be set to derail or limit us. His purposes are always fulfilled and He is always working for the good of His people. The cliché says that everything happens for a purpose. I think it's more accurate to say that things happen, and God works them for His purposes.

"And we know that for those who love God all things work together for good, for those who are called according to his purpose"
- Romans 8:28



It can be easy to see the purpose or "the point" of the most meaningful moments in life. Our big achievements, milestones, times of fun and joy, or even school holidays that go exactly to plan. However if God can be at work in our moments of struggle, boredom, patience and frustration then surely I can look for purpose in all things. So often the best and most meaningful moments of my life have come when things haven't gone to my plan or when it felt like I was wasting time. Maybe the rest and time at home was exactly what I needed and maybe the Creator of Heaven and Earth knows what I need a little better than I do. I bet that in 20 years time I'll be begging for two weeks at home with my kids.

Blessings,

Sam

JUNIOR SCHOOL NEWS

Junior School Developments

TORI WEISS | HEAD OF JUNIOR SCHOOL

Welcome back to school for Term 3! We have loved welcoming the students back and hearing all about their adventures over the last few weeks. We are looking forward to another productive term together.



Since coming back there have been some exciting developments in the Junior School.

New Early Learning Centre

It is certainly hard to miss the building works occurring right out the front! While it is causing some short-term pain at school drop off and pick up, it is going to be so worth it in the long term! (Thanks for your patience and understanding at these busy times of the day – you have been fantastic!). Soon, you will see a brand-spanking new, purpose built Early Learning Centre that will allow us to accommodate almost double the amount of Early Learners we do currently. We hope to be ready to open the doors early-mid next year. In the meantime, our current Early Learners are getting a first-hand experience of what the building process looks like. It is not unusual to see them clustered as close as they can get, peering through the fence and marvelling at the diggers and machinery required to bring such a project to life.



New Nature Play playground

If you have been at Encounter for a while, you would have heard us talking about the importance of nature play. We strongly believe it helps children experience more diverse and imaginative play, by developing advanced motor skills and fitness, contributing to physical and mental health as providing opportunity for children to strengthen social connections.

Climbing Tree (who also constructed the nature playground near the Causeway) has recently completed a unique, custom built playspace for Encounter, incorporating some of the ideas from our very own students! Timber from the Block has been re-purposed (along with the sustainably sourced materials) making for a very special construction for our students to explore. You will notice that singular-purposed equipment like slides and monkey bars don't feature in this construction, being replaced with such things as log scrambles and steppers and climbing nets. The focus shifts from one way of using a piece of equipment to thinking creatively how to use the space. Using natural elements like rocks, logs, trees, and sand, are also embedded to promote a sensory experiences and active exploration.

Visible Learning for Mathematics

While students commenced their first week of holidays staff accessed a week of valuable Professional Learning. One of the key foci for JS staff during that week was the teaching and learning of Mathematics. We chose to engage Corwin to assist with this. They will be working with us for the coming months. Enabling teachers to discover strategies that build students' conceptual understanding of mathematics ideas and learn to design classroom experiences that hit the surface, deep, and transfer phases of learning for immediate impact in the classroom. Corwin believe that "every student should experience at least one year's growth over the course of one school year". We are excited to see how things translate into practice over the coming semester.

Tori

JUNIOR SCHOOL NEWS

National Tree Planting Day

On **Wednesday 9th August** (Week 3), the children in the Junior School will be celebrating National Tree Planting Day. This day provides an opportunity for us to action a grant we won from Planet Ark, enabling us to plant 3,000 plants and improve the biodiversity of plant species in our local area.

Trees are a gift to our planet and ourselves. They support life on earth and provide humans with the air we breathe.

There are a number of reasons we should plant trees:

- To tackle climate change - Trees absorb CO₂, a greenhouse gas that contributes to climate change. In addition to removing carbon from the atmosphere, trees, shrubs and grasses also store carbon and are important carbon sinks. Trees also release oxygen to sustain life on earth.
- To clean the air - Trees clean the air we breathe, by absorbing harmful pollutants like nitrogen oxides, ammonia and sulfur dioxide. These pollutants can have negative impacts on the health of humans, animals and plants, so trees play a key part in keeping our earth's living inhabitants healthy and reducing the effects of climate change.
- To prevent soil erosion and improve water quality - Intricate tree root systems hold soil in place, encouraging water to seep into soil rather than running off into nearby water sources. This process is important as runoff picks up and carries pollutants which can run into rivers, lakes, wetlands and oceans, where it can have a negative impact on aquatic ecosystems and wildlife.
- To create and restore habitats - Without trees, hundreds of species of animals and other native vegetation would have nowhere to call home. A single tree can provide a home to a number of living things including mammals, reptiles, birds and smaller organisms such as insects, fungi and other plants.
- Planting native seedlings can improve habitat for native wildlife, leading to increased

populations and supporting endangered species. It also allows for the development of vegetation corridors, which are crucial in allowing wildlife to move between fragmented habitats.

- To improve your mental and physical health - Humans are biophilic creatures, meaning we have an innate tendency to seek connections with nature and other lifeforms. Because of this, being in the presence of nature reduces stress and anxiety in humans, in addition to other health benefits such as lowering blood pressure and reducing risk of diabetes, cardiovascular disease and stroke. Getting out and planting trees is a fun and easy thing to do and a great activity to connect with family, friends and your community.

Families are warmly welcomed to Encounter on 9th August (refer to the timetable on page 7 for your child's class) to support your child in planting a tree to celebrate National Tree Day. Students and families will also be treated to a delicious sausage sizzle as a way to thank you for your support. Register online at <https://forms.office.com/r/Que909LHmv>



STAFF NEWS

INTRODUCING... **Patrina Grace**

Hi, I'm Patrina Grace and I'm the new Events & Marketing Officer at Encounter.

What drew you to Encounter Lutheran College?

I was looking to return to Victor Harbor from the Mid North and this role and location were perfect for me. I have friends whose children attend Encounter and they have always talked positively about the school and staff.

What were you doing before coming to

Encounter? I have worked for the Department for Education for 15 years. For the last 18 months I have been working as Executive Assistant to the Education Director for Mid North and Lower Mid North. Prior to that I spent 7 years at Yankalilla Area School as Community Liaison, Communication and Event Manager.

What were your first impressions of Encounter Lutheran College? The location is beautiful and the facilities are very impressive. I have found the staff to be warm, welcoming and friendly.

What is the favourite thing about your job? I'm not sure yet but after working from home for the last 2 years I am looking forward to meeting and interacting with our school staff

What are you most excited about for this year? Creating a new home.

What are you most passionate about?
My two (adult) boys.

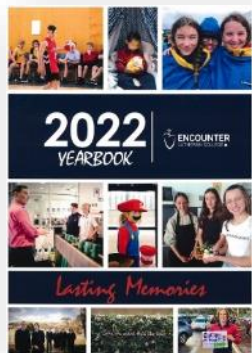


What do you do for fun or relaxation?

Beach walks/hiking, photography and cooking

What is your favourite place that you have ever lived or visited and why? I lived and got married in British Columbia, and particularly loved spending time at our family cabin on Lasquiti Island.

What is your favourite animal and why? We said goodbye to our 14-year Labrador this year. We miss his happy face, waggy tail and unconditional love.



2022 Yearbooks

The College has a few spare copies of the 2022 College Yearbook remaining. If you have not yet received your copy or would like an additional one, please pick one up from the Front Office.

Junk email reminder

A reminder to check your Spam or Junk email folder. Sometimes emails sent from the College will finish up in these folders. To ensure that you don't miss any important communication, please remember to check these email folders regularly, whitelist or mark any emails from @encounter.sa.edu.au as a safe sender.

COLLEGE NEWS

Extra-curricular Photo Day

Thank you to all families for your support of our main College Photo Day held yesterday at Encounter.

Our students are to be commended on their presentation on the day (and for their beautiful smiles!). The photographers commented many times on the behaviour, friendliness and attitude of our students, and how smoothly the day ran.

Catch-up Photos

For students who were away today or missed their individual portraits or sibling photos, please come directly to the Kondole at 8.45am on Monday morning for our catch-up day. Reminder emails will be sent directly to these families and Order Envelopes are still available at the Front Office for any late sibling/family photos.

Late Orders—Ordering after Photo Day

If photo day has already been held at your school, then you are only able to order photos online, we cannot accept cash payments in an advancedlife order envelope after photo day.

You can order online up to a week after photo day. If you have missed pre-ordering before photo day, you can still order photos after photo day by going to www.advancedlife.com.au

and entering the 9-digit advancedorder school code (HTY 4HN WBE) which will give you online access to easily purchase photos. Late orders may not always make the main delivery of all orders back to your school but will be delivered to your school as a separate delivery.

Or you can wait for the school photos to be delivered to the school, when your child will be given a "Urgent Action" / "Don't Miss Out" card that will have a picture of your child and a unique code to access your child's personal advancedyou online student site. This unique personal code can also be found on the back of packages you have purchased for your child in previous years.

For further details or questions, go to:

www.advancedlife.com.au/FAQ

SCHEDULE - Monday 31st July

advancedlife
school photography & print specialists

- **8.30am** - College Captains (inc Principal and HoMSS)
- **8.30am** - College Captains and Prefects
- **8.45am** - Junior School Captains (inc Pr & HoJS)
- **8.45am** - Junior House and College Captains (inc Pr & HoJS)
- **8.45am** - **Catchup individual portrait photos and sibling photos**
- **9.00am** - Sibling/Family Photos catchup until 10.30am for those who were absent on Thursday 27th July.
- **9.00am** - During this day any absentees from Day 1 can be done on portrait station in the morning.
- **9.00am** - High School Musical Cast and Crew
- **9.15am** - Middle/Senior School Vocal Group
- **9.20am** - Middle School Band
- **9.25am** - Senior School Band
- **9.30am** - Shine Band
- **9.35am** - Junior School Rhythmix Choir
- **9.45am** - Junior School Eco-Committee
- **11.45am** - Specialist Basketball Development Program: Year 5/6 Boys
- **11.50am** - Specialist Basketball Development Program: Year 5/6 Girls
- **11.55am** - Specialist Basketball Development Program: Year 7/8 Boys
- **12.00pm** - Specialist Basketball Development Program: Year 7/8 Girls
- **12.05pm** - Specialist Basketball Development Program: Year 9/10 Boys
- **12.10pm** - Specialist Basketball Development Program: Year 9/10 Girls
- **12.15pm** - Specialist Basketball Intensive Training Program: Senior Boys
- **12.20pm** - Specialist Basketball Intensive Training Program: Senior Girls
- **12.25pm** - Specialist Netball Program: Development Training Squad
- **12.35pm** - Specialist Netball Program: Intensive Training Squad

COLLEGE NEWS

College Community National Tree Day

Wednesday 9th August 2023

National Tree Day is coming up across Australia at the end of July, but at Encounter, we'll be holding a very special community day on Wednesday 9th August. We'll be taking a delivery of 3,000 trees to be planted on Block 69 thanks to a grant we won from Planet Ark, to improve the biodiversity of plant species in our area.

Each Junior School class will have an opportunity to plant trees across the day, and families are invited to join us for this very special occasion!

Parents are invited to plant trees together with their children at their designated year level times, but we're also looking for about 20 parents who might like to commit to spending the whole day (or half a day) with us to assist with the plantings.

For further information, please contact Leah Read at leah.reid@encounter.sa.edu.au or join our Friends of Block 69 Facebook Group at www.facebook.com/groups/encounterfriendsoftheblock



TREE PLANTING DAY SCHEDULE

- **9.20am** (Lesson 2) - Foundation
- **10.10am** (Lesson 3) - Year 6
- **10.50am** (Lesson 4) - Year 2
- **11.30am** (Recess)
- **11.55am** (Lesson 5) - Year 4
- **12.35pm** (Lesson 6) - Year 1
- **1.15pm** (Lunch) - Free BBQ lunch provided for parent volunteers helping on the day
- **1.55pm** (Lesson 7) - Year 3
- **2.35pm** (Lesson 8) - Year 5
- **3.15pm** (Conclude)

Tree planting will be for 45-minute sessions. If you're able to assist on the day, please register your details using the following link:

<https://forms.office.com/r/Que909LHmv>



 **thrive**  **connect**  **belong**

MIDDLE & SENIOR SCHOOL NEWS

2023 Subject Selection & Careers Expo

Wednesday 2nd August 2023

All Middle and Senior School students and their parents are invited to our 2023 Subject Selection & Careers Expo at the College on Wednesday 2nd August from 5.30pm – 8.00pm.

Information will be provided that has been tailored to each year level, with sessions running throughout the evening in the Senior School Plaza as follows:

- 5.30 pm - Years 8 & 9 in 2024
- 6.00 pm - Year 10 in 2024
- 6.30 pm - Year 11 in 2024
- 7.00 pm - Year 12 in 2024



The expo will be set up in the Kondole and open from 6-8pm



University of
South Australia



THE UNIVERSITY
of ADELAIDE

Encounter Careers Expo
Wednesday 2nd August
6-8pm in the Kondole



Government of
South Australia



MEGT



Flinders
University

- MEGT - www.megt.com.au
- MAXIMA - www.megt.com.au
- Academy of Interactive Entertainment - www.aie.edu.au
- University of South Australia - www.unisa.edu.au/study

- Flinders University - www.flinders.edu.au
- University of Adelaide - www.adelaide.edu.au
- Tabor Institute of Higher Education - www.tabor.edu.au

- TAFE SA - www.tafesa.edu.au
- AGA - www.aga.com.au
- Mas National - www.masnational.com.au

MIDDLE & SENIOR SCHOOL NEWS

STUDENT ACHIEVEMENT

Australian Interschool Championships in Equestrian

Ella-Rose Evans has qualified to represent our school in Equestrian at the Australian Interschool Championships at Werribee Park National Equestrian Centre in Victoria in late September. To do this, she had to get three qualifying scores on her gorgeous pony Little Black Suzie who is 17 years old and has been Ella-Rose's riding partner for the last 6 years. This will be her last year pairing up with Suzie as the mare is only 13hh and Ella-Rose, who is currently in Year 8, is outgrowing her.

The combination will be competing in Dressage and Combined Training. The latter involves combining her dressage score and show jumping. Ella-Rose said that Suzie is a careful jumper and relies on her rider's confidence. They have also competed, with many wins, around the district in Eventing which is dressage, show jumping and cross-country jumping combined, so Suzie is a great allrounder.

Ella-Rose said that she would particularly like to thank her Mum for taking her everywhere, often very early in the morning and having to learn from scratch all about horses to support her. She also wished to thank her local dressage coach, Linda O'Leary. Encounter wish Ella-Rose and Suzie all the best with their travels to Werribee and results in both competitions and will be cheering them on!



Semester 1 Year 12 Research Project Results 2023

MEL O'DONNELL | SACE COORDINATOR

In Semester 1 our Year 12s completed their SACE Research Projects – a yearlong undertaking that has helped to develop our students' resilience, problem solving and initiative. The Research Project is a compulsory component of their Year 12 studies, and for most students it will contribute to their ATAR at the end of this year. Each student designed a research question to investigate, and produced a 2000 word Outcome in answer to this question.

It is testament to their hard work and perseverance that all 40 Year 12 Encounter students resulted in this semester have passed this subject. It is especially exciting that 37.5% of our students achieved a result in the A grade band, far outperforming the state average. All year 12 students are congratulated on their results.

Year 12 Gratitude Dinner

CHANGE OF DATE

Due to the Year 12 Exams concluding a week earlier than in previous years, we have made a change of date to the Year 12 Gratitude Dinner which will enable all students to commence their end of school celebrations following their exams. Please note the new day and date in your calendars:

New Date: Thursday 16th November, 6.00pm

Further information regarding tickets will be distributed towards the end of this Term 3.

MIDDLE & SENIOR SCHOOL NEWS

Year 11 Canberra Tour

For the second time this year Encounter students visited Canberra for a civic, citizenship, and history camp. This time it was our Year 11 cohort who have recently undertaken an education tour of the national capital. Students were given the opportunity to participate in a variety of educational programs with a focus on Australia's history, culture, heritage, and democracy. Sites visited included the Australian War Memorial, Parliament House, and the Museum of Australian Democracy, as well as the National Zoo and Aquarium, the National Arboretum, and the High Court.

The Australian Government recognises the importance of all young Australian being able to visit the national capital as part of their Civics and Citizenship education. To assist families in meeting the cost of the excursion the Australian Government is contributing funding of \$90 per student under the Parliament Civics Education Rebate program towards those costs. The rebate is paid directly to the school upon completion of the excursion.

As seen from these photos the Year 11's enjoyed the experience of Canberra and the activities on offer.



COLLEGE NEWS

Sustainable School Shop

SECOND-HAND UNIFORM TRADING

Encounter Lutheran College is conscious of the need to provide an efficient process for families to be able to buy and sell their uniforms and other student resources.

We are delighted to inform you of the College's new initiative to provide parents with the ability to trade these second-hand items via the Sustainable School Shop website:

www.sustainableschoolshop.com.au

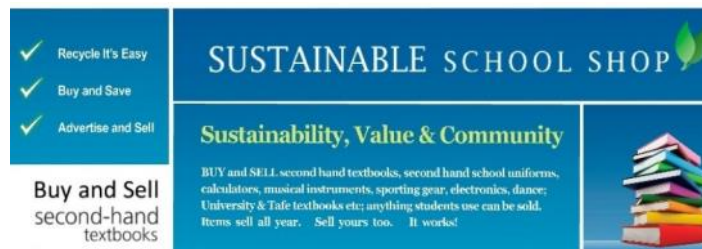
Results from other schools have been excellent; families have enjoyed a more comprehensive and convenient method of trading these items; and this new service is far more accessible. The service provides access to second-hand uniforms, calculators, stationery, musical equipment, etc all year.

The College is providing this service to our community; when registering on the Sustainable School Shop you need to nominate Encounter Lutheran College to receive your subscription.

All enquiries should be directed to the Sustainable School Shop on: 0438 743 444 or help is also available through 'Contact Us' on their website at

www.sustainableschoolshop.com.au.

We are very excited about this new initiative being offered to parents and we hope you will make the most of the opportunity to annually recycle your student's school items as this will help another family and student at our school.



For the best results:

- Register on the Sustainable School Shop website
- List your items for sale
- List wanted ads for those items you are looking to buy
- The school's uniform lists are loaded into the system to make listing ads easy
- The system matches the ads of buyers with sellers and notifies the buyer via email
- Buyers contact sellers and arrange where and when to trade
- The second-hand uniform stocktake report the system provides is very helpful
- Parents are well supported via Sustainable School Shop's telephone (0438 743 444) and email help lines
- The system is simple and easy to use - If you don't have a computer, internet access or an email address, please call the Sustainable School Shop for assistance.

For easy reference, the Sustainable School Shop links are also listed on our College Shop website at: www.encounter.sa.edu.au/college-shop

COLLEGE NEWS

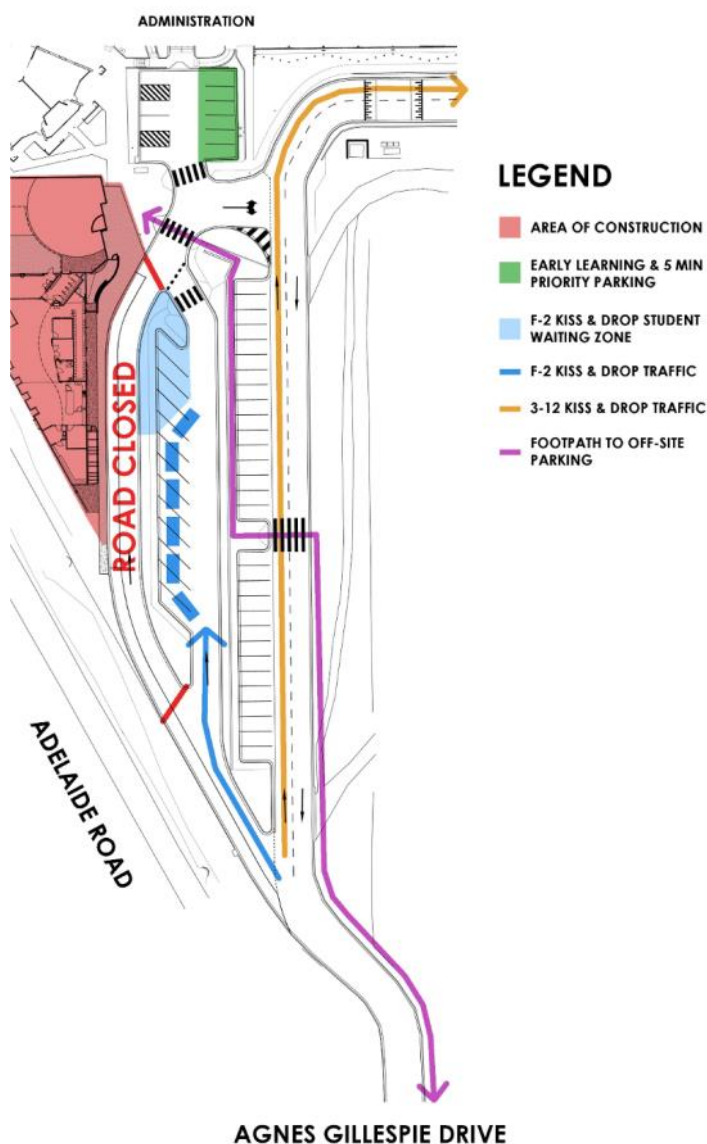
Changes to Car Park Traffic Flow

A reminder to our families of the temporary changes to our car park traffic flow throughout Terms 3 and 4 during the construction period of our new Early Learning Centre. All of these changes have been implemented to uphold student safety and to minimise the impact on the Encounter community, especially at peak times.

The summary of changes include:

- The original kiss n drop is unavailable due to its proximity to the Early Learning construction site.
- The temporary kiss n drop is in the first row of car parks, accessible for families with any children in Foundation to Year 2. This is marked in blue on the map. (If you have children in F-2 as well as other year levels, your whole family can use the F-2 kiss n drop).
- Families with students in Years 3-12 now have their kiss n drop in the back car park, closest to the Kondole entrance.
- The disability parking in front of Administration remains as it is.
- The remaining six car parks opposite are available for Early Learning families and other families collecting or dropping students to or from Students Services for appointments. This is strictly to be used by families only needing the car park for 5 minutes.
- Buses will arrive and leave from old Adelaide Road as they have done. Students will now access the College via a new pathway north of the current gate, between the Year 2 classrooms and the Junior School toilets; and,
- No parking will be permitted on old Adelaide Road.

Thank you in advance for being patient, and supportive and for ensuring that student safety and courtesy are prioritised during this time of change.



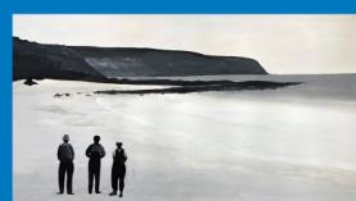
COLLEGE NEWS

SALA Schools Art Show

Encounter Lutheran College - Goolwa Children's Centre - Goolwa Primary School
Goolwa Secondary College - Investigator College - Port Elliot Primary School
Victor Harbor High School - Victor Harbor Kindergarten - Victor Harbor Primary School

Venue - Investigator College: 9 Bacchus Rd. Victor Harbor

Opening Hours: Sat Aug 19th 10am-4pm Sun. Aug 20th 10am-2pm



Sponsors: Victor Harbor Council, Alexandrina Council, Rotary Victor Harbor, The Strand Gallery, Goolwa Central Meats, Taronga Almonds, Alexandrina Cheese Company, Lilyarra Artisan Cheeses, Peninsula Providore, Paris Creek Farm, RAW Bulk Wholefoods, Bunnings Mountain Fresh Juices, The Joinery Wine Room - Charlotte Dalton and Cooke Brothers Wines, Odd Fellows Wines, Smiling Samoyed



Book Week Dress-up Day Friday 25th August

**Dress up as your favourite
book character**

** Recycled / environmentally-
friendly creative costumes
encouraged!*

COMMUNITY NEWS

A fun, family friendly church for all ages valuing hospitality, creativity and celebration

6 August

Feeding Frenzy

3.30pm-5.30pm at the
Lutheran Church Centre
with meal provided



Victor Harbor

10 September

What is Family?

29 October

Messy Church goes
Wild @ Block 69

3 December

Preparing for
Christmas



victorharbormessychurch

Lutheran Church Centre, 21a Adelaide Rd Victor Harbor
E: messychurch@victorlutheran.org P: Church office 08 85525380